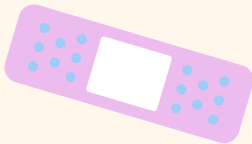
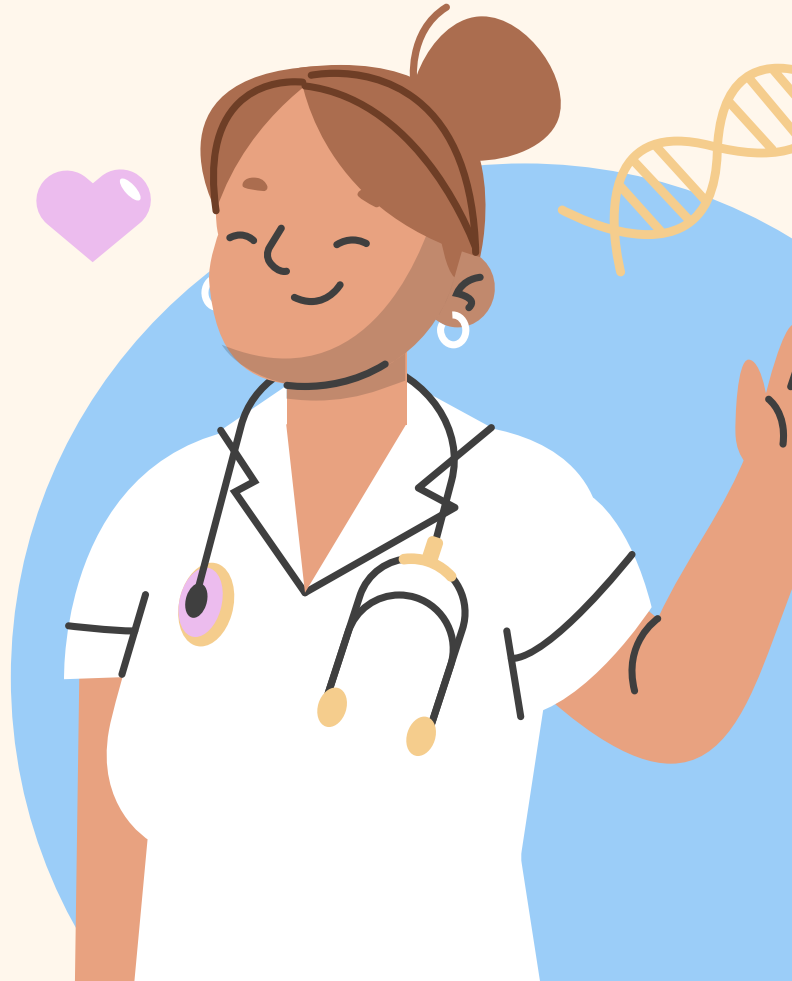
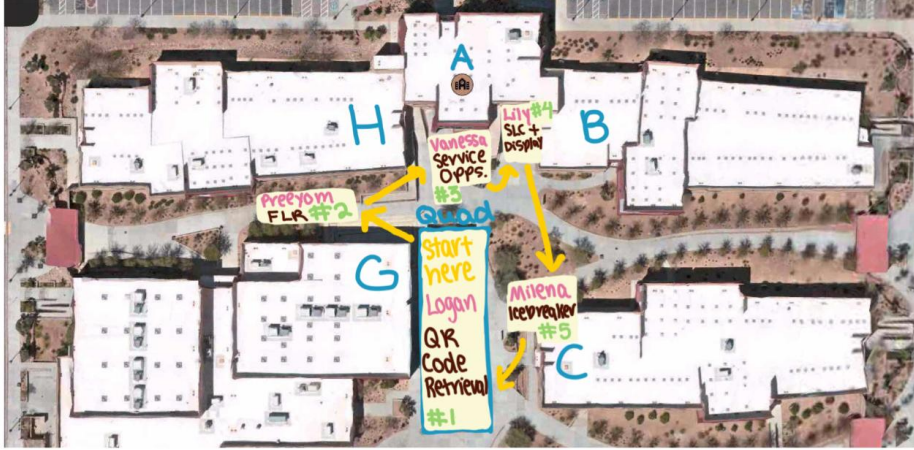




Welcome to WCTA HOSA

Third General Meeting





(numbers on the map indicate each group's starting station)

Key

Building

Directions

Officer in Each Section

Meeting Spaces

Activity

Starting Station

Groups
(by last name)

1. A-C

2. D-K

3. L-M

4. N-S

5. T-Z



Stations



QR Code Distribution:

Logan @ Main Quad

FLR (Fall Leadership Rally):

Preeyom @ Amphitheatre (by cafeteria between G & H)

Service Events & Opportunities:

Vanessa @ A building

SLC (State Leadership Conference):


Lily @ B building

Icebreaker:

Milena @ C building



Note: Chloe will be walking around to help & act as photographer





QR Code Distribution



Fall Leadership Rally (FLR)



HOSA Fall Leadership Experience

- **What is it?** Leadership Conference (not competition) with keynote speaker, leadership training, and more!

Highly recommended for those interested in an officer position next year!

- **When:** Thursday, November 10: 8:30am - 1:15pm (B day)
- **Where:** Santa Fe Station Hotel
- Those who filled out interest form (due Tuesday) will receive a packet that must be filled out and returned to Mr. G by October 28th
- \$15 fee
- Spots are limited!!

FLR Interest Form



HOSA Attire Example



Business Attire Example

Sample traditional business attire for men

Traditionally patterned shirts and ties can be more brightly colored

Dark and subtly patterned suits

Relaxed but elegant shoes



Sample traditional business attire for women

Professional tops without a deep neckline

Suits can be more brightly colored

Tights

Closed-toe shoes



Access to 10/17/22 slides:



Or type

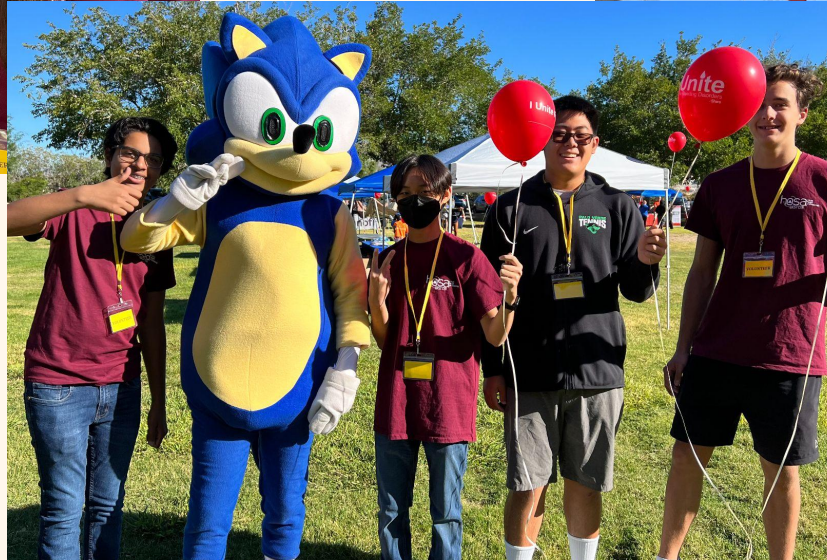
**[https://tinyurl.com/
ThirdHOSAMeeting](https://tinyurl.com/ThirdHOSAMeeting)**

Into a new browser

The background features various medical and nature-themed illustrations. At the top left is a white circular icon with a black outline. Next to it are a purple and white capsule and a white and orange capsule. To the right is a white thermometer with a purple tip and a blue DNA double helix. Further right are green and yellow leaves. On the left side, a purple and white stethoscope is visible. At the bottom left are more green and yellow leaves. At the bottom center is a white pill blister pack with several blue and white pills. To the right of the blister pack is a purple bandage with a white center and blue dots. At the bottom right is a blue heart icon and a green clipboard with a white sheet of paper and black lines.

Service Event Recap

Hemophilia Walk Recap





Upcoming Service Events



JDRF One Walk

- **Registration Status:** CLOSED
- **Date:** Saturday, October 22 @ UNLV
4505 South Maryland Parkway
- **Time:**
 - Food Distribution Shift: 9 am - 1 pm
 - Event Clean Up Shift: 11:30 am - 3 pm
- Join the **remind @JDRF1walk**



Breast Cancer Walk



- **Registration Status:** CLOSED
- **Location:** Red Rock Casino & Spa 11011 W Charleston Blvd
- **Event Date:** Sunday, October 30th
- **Time:** 6:30 am - 11:30 am
- Join the **remind @stride22**
 - We will be sending out the specific meeting location through here later on!





Breast Cancer Walk Set-Up Event



- **Registration Status:** CLOSED
 - **Date:** Saturday, October 29th
 - **Time:** 1-5 pm
 - **Location:** Red Rock Casino & Spa 11011 W Charleston Blvd
 - Join the **remind @strideset**
 - We will be sending out the specific meeting location through here later on!
- 
- 

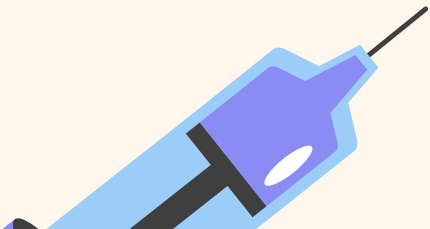
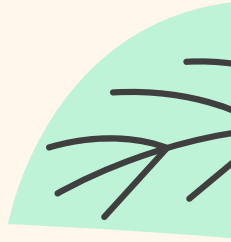
OV Thrift Store

- **When:** Anytime on your own
- **What:** Help around the thrift store and follow around the supervisor's instructions
- **Where:** 390 S Decatur Blvd
- Dress comfortably but presentable
- Upon signing up, **send a Remind or email us** that you will be attending
- To receive the hours, have the supervisor **sign a piece of paper with the time stamp** from when you've started or entered along with a **picture**
- **Remind:** @OVthrift22

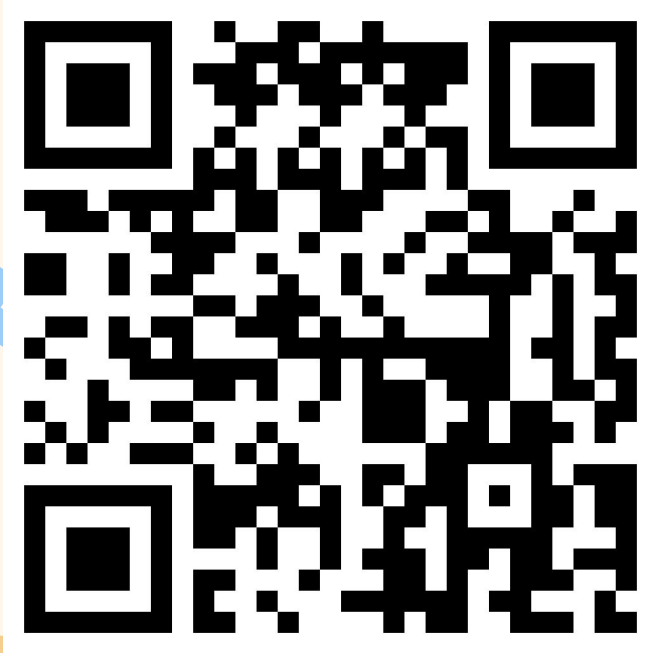
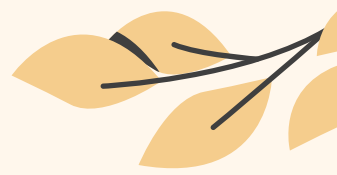


Reminders for Service Events & Opportunities

- Arrive 10-15 minutes before the event starts
- Always join the event-specific reminds
- Let us know beforehand if you are for some reason unable to make an event you signed up for
- Don't show up without having registered
- Wear your HOSA shirt!

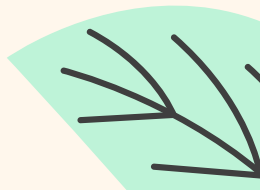


Vanessa's Survey :)



OR

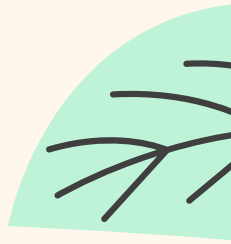
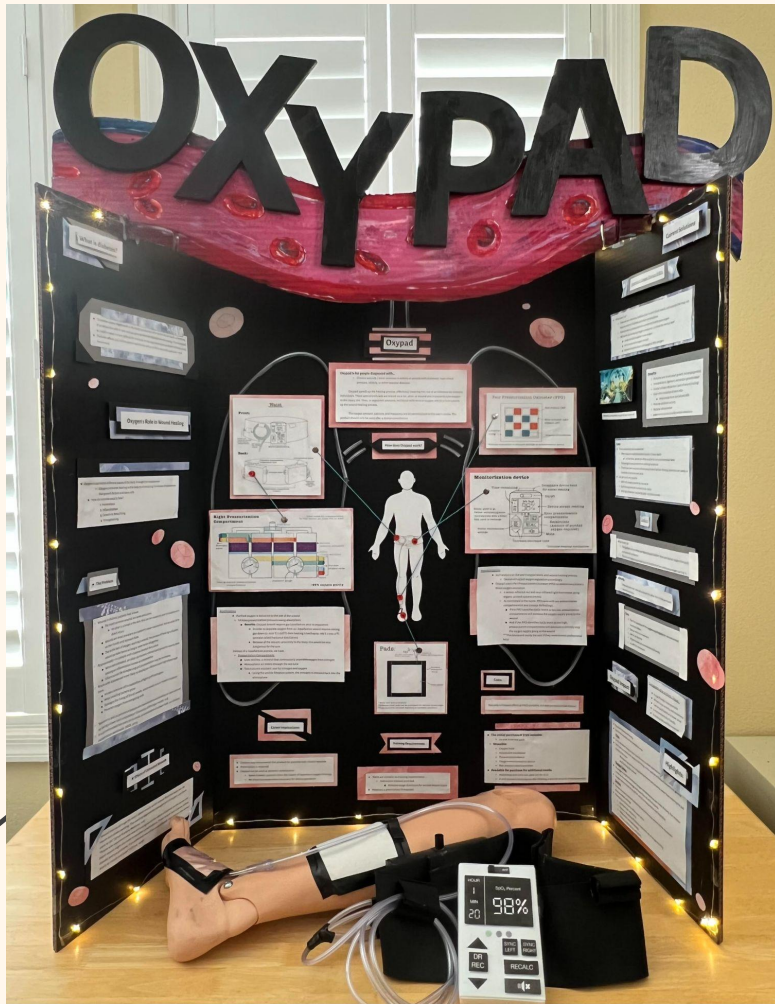
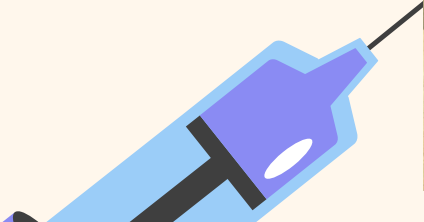
[https://tinyurl.com/
WCTAHOSAsurvey](https://tinyurl.com/WCTAHOSAsurvey)





State Leadership Conference (SLC)





Script



<https://tinyurl.com/oxypadscript>

Video

https://youtu.be/pbLAcf3I_7I

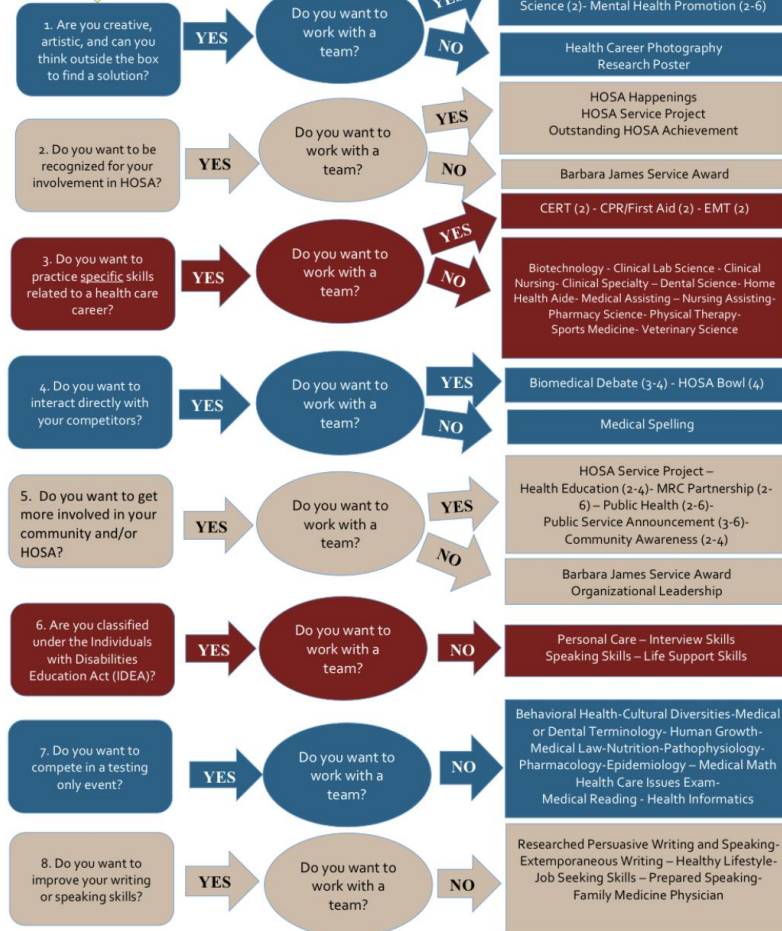
**What do you call a
frozen ibuprofen?**



How to Choose a HOSA Competitive Event That's Right For You?

START HERE!

Secondary/Postsecondary Division





Icebreaker

